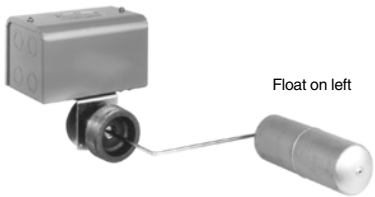


Front



Type CG36



File No. E12158
excludes NEMA 7 & 9 products
(9038AR, CR, and DR)



File LR25490
excludes NEMA 7 & 9 products
(9038AR, CR, and DR)

Type C, Closed Tank, with Bushing

Flange mounted with bushing for control of liquid level within a closed tank. Build up the switch to meet your requirements from the basic switch, rod kit, and float kit groups below.

Type C switches are attached to the tank by means of a 2-1/2 inch screw-in connection. An external pointer indicates the float position within the tank when the unit is mounted. Switches come complete with screw-in connector, stainless steel float and rod.

Table 22.74: Class 9038 Type C

Float Position Viewed from Front of Switch Facing Indicator Scale	R in. (mm)	Approx. Water Level Change		NEMA Type 1		NEMA Type 4		NEMA Type 7, 9	
		Min. (in.)	Max. (in.)	Type	\$ Price	Type	\$ Price	Type	\$ Price
Right									
Left									
Right	4.25 (108)	4 (102)	7.75 (197)	CG33					
Left	—	—	—						
Right	—	—	—						
Left									

Table 22.75: Type C Float Travel Adjustments

R in. (mm)	A in. (mm)		B in. (mm)		C in. (mm)		D in. (mm)		F in. (mm)	
	Min.	Max.	Min.	Max.	Min.	Max.	Min.	Max.	Min.	Max.
◆										
■	4.25 (108) ▲	2 (51)	3.5 (89)	3.5 (89)	4.75 (121)	2.5 (64)	3.75 (95)	3.5 (89)	4.75 (121)	7 (178)

- ▲ CG33,
-
- ◆

Figure 22.21: Travel Dimensions

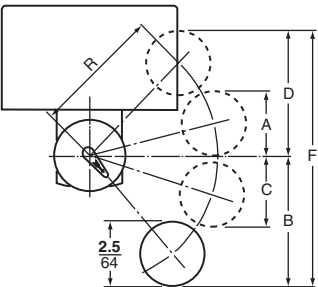
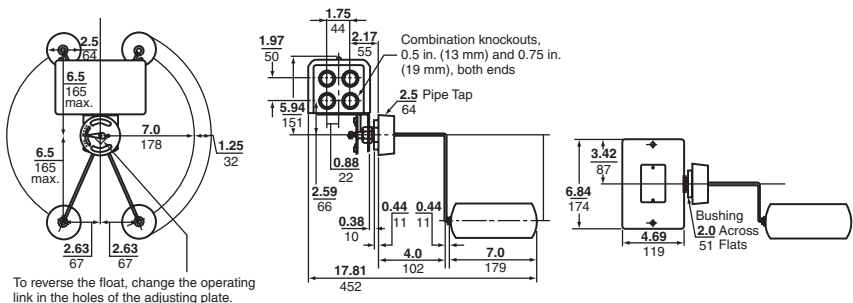


Figure 22.22: Type CG Dimensions



To reverse the float, change the operating link in the holes of the adjusting plate.