

EVO-TPC - Areas of Use

The EVO-TPC is a direct mount thermostatic head with a tamper protection cover. It is used in order to protect and prevent unauthorized manipulation of thermostatic head settings.

Description

The EVO-TPC is two parts plastic which are mounted around a special EVO-28 Macon thermostatic head designed to accept them and held in place by two metal rings.

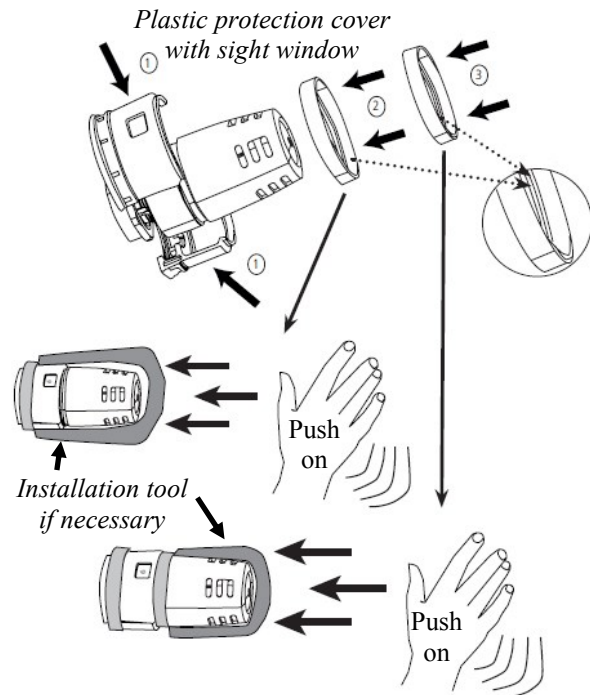
Assembly Instructions

- Set the required minimum and maximum temperatures according to the instructions on page 2 before installing the TPC.
- Assemble the plastic protection covers (#1) around the thermostatic head with the sight window aligned with the dial setting window.
- Thread ring (#2) over the thermostat with the inside groove towards the leading edge, aligning it's edge with the bottom edge.
- Thread ring (#3) over the thermostat with the inside groove towards the leading edge.
- Press rings firmly into place.



NON-ELECTRIC OPERATORS

Above EVO-TPC shown installed on a special EVO-28 designed to accept the locking components.



TECHNICAL DATA - Operator			
Temperature Setting Range	50°F to 82°F	Material	Engineered heat resistant thermoplastic (PBT,POM)
Maximum Storage & Ambient Temp.	122°F		
Maximum Water Temp.	250°F		
Maximum Steam Pressure	15 psig		
Maximum Differential Pressure	20 psi		
Suggested Differential Pressure	0.5 to 2.9 psi		
Max. Movement	0.125"		
Nominal Opening	0.018 (3.6°F)		
Long Term Test	5000 Cycles (1.3°F)		
TECHNICAL DATA - Tamper Protection Cover			
Castings Material	Polyamide	Weight	2.50 oz.
Rings	Chrome plated metal		



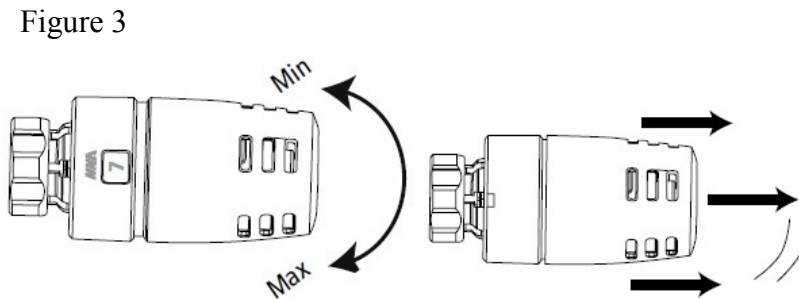
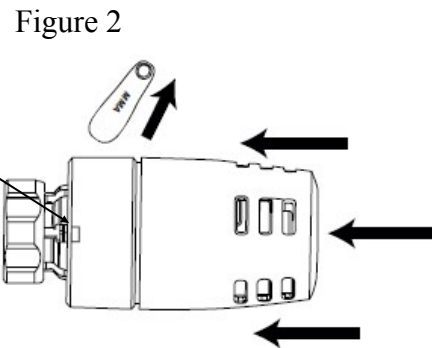
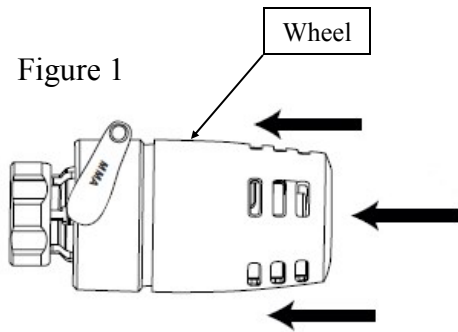
Maximum & Minimum Setting

Maximum setting

1. Turn the wheel to maximum.
2. Push the mark in with limit tool (located opposite the dial setting window) and press in the wheel handle 1-2 mm until it stops. (Figure 1)
3. Remove the limit tool and press in the wheel handle until it stops. (Figure 2)
4. Set the required temperature according to the chart below.
5. Pull the wheel handle out and the maximum temperature is set. (Figure 3)

Minimum setting

1. Turn the wheel to minimum
2. Push the mark in with limit tool (located opposite the dial setting window) and press in the wheel handle 1-2 mm until it stops.
3. Remove the limit tool and press in the wheel handle until it stops.
4. Set the required temperature according to the chart below.
5. Pull the wheel handle out and the minimum temperature is set.



DIAL SETTINGS								
0	*	1	3	5	6	7	8	9
Off	50	54	61	68	72	75	79	82
	Frost Protection							

