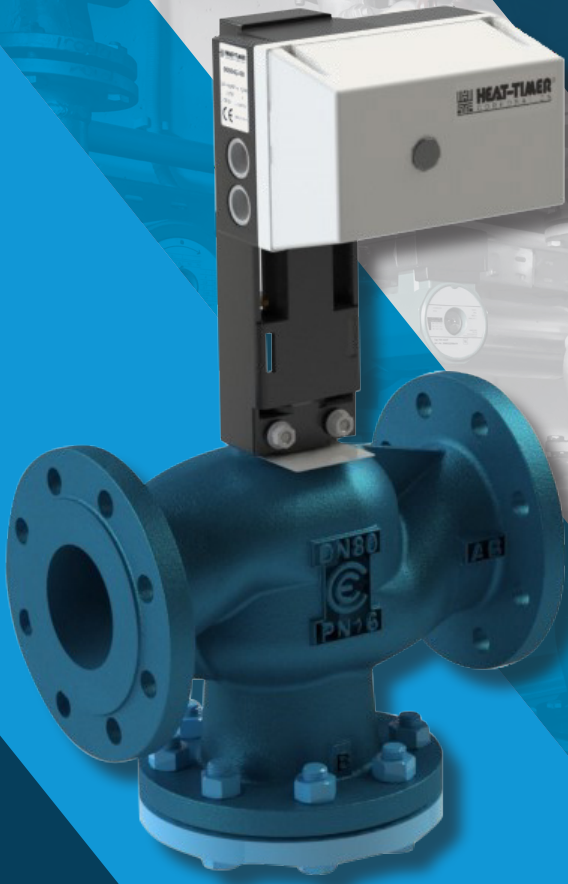


## 2-WAY AND 3-WAY MOTORIZED VALVES FOR STEAM, VACUUM AND HOT WATER APPLICATIONS



### VALVE AND ACTUATOR FEATURES

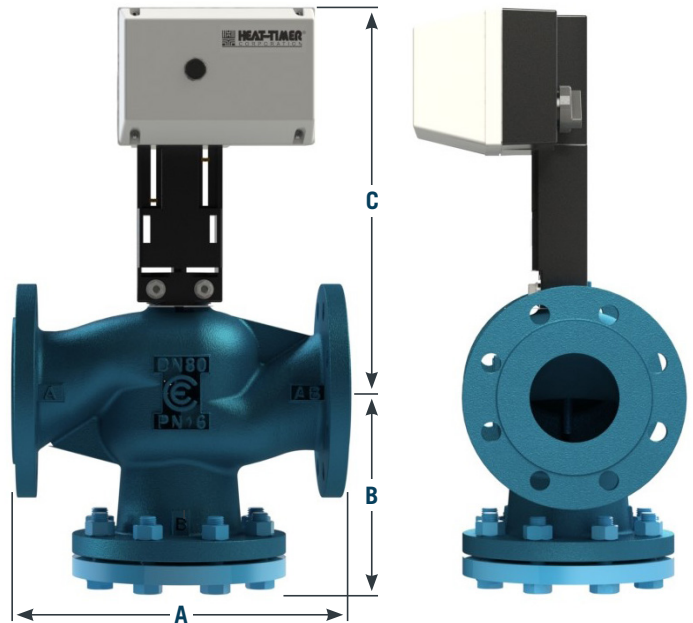
- Valve Sizes range from 2½ inch to 8 inches
- 2-Way and 3-Way Single Seated and 2-Way Double Seated Configurations
- ON/OFF or Modulating—Floating Signal Actuators
- Complete Valve Assembly includes Valve Body, Actuator and 24V 40VA Transformer
- Can be mounted on horizontal or vertical piping
- Leakage is less than 0.03% of full flow per EN1349 Standard
- Designed for Steam, Vacuum and Hot Water Applications
- 3 Types of Actuators available—24V Floating, 0–10V Proportional and 24V Floating with Valve Position Feedback
- Maintenance Free Multi Stack Stem Packing provides Service Longevity



## 2-WAY STEAM APPLICATION VALVES—BALANCE PLUG/DOUBLE SEATED

**High Pressure Steam Heating.** 2-way double seated or balanced valves can turn on or off the flow of steam from the boiler or other sources in a steam distribution system greater than 15 PSI where the maximum operating pressure is high and the allowable leakage is low.

**Advantage.** The unique balance plug valve design and the double seated valve is more suitable in applications where the system pressure and the differential pressure are both high. Typical application include high pressure steam in district heating, boiler supply water and steam heating.



VALVE SIZE	PART NUMBER	PORT	FLOW CV RATING	DIMENSIONS—INCHES			SHIPPING WEIGHT LBS	MOTOR SPEED APPROXIMATE MINUTES
				A	B	C		
2 ½"	928072-XX	Balanced	73	11.4"	6.9"	13.5"	66	2
3"	928073-XX	Balanced	115	12.2"	7.3"	13.9"	83	2
4"	928074-XX	Balanced	150	13.8"	8.1"	14.4"	128	2
5"	928075-XX	Balanced	231	15.7"	10.0"	15.3"	162	2
6"	928076-XX	Balanced	347	18.9"	10.8"	16"	205	2
8"	928078-XX	Double seated	578	23.6"	10.8"	23.4"	400	2

**NOTE:** Replace **XX** as follows: **00** for 24V Floating Actuator, CV for 0–10V Proportional Actuator, **VAC** for 24V Floating Actuator with Valve Position Feedback.



## SPECIFICATIONS

Valve Body Material \_\_\_\_\_ ANSI B16.1 Iron

Valve Connection \_\_\_\_\_ 125 lb ANSI Flange

Temperature Rating \_\_\_\_\_ 14°F to 302°F (-10°C to 150°C)

Stem/Plug Material \_\_\_\_\_ Stainless/Brass

Seat Closure \_\_\_\_\_ Double or Balance Port ANSI | Class IV Shutoff

Packing Material \_\_\_\_\_ Long Life EDPM Rubber

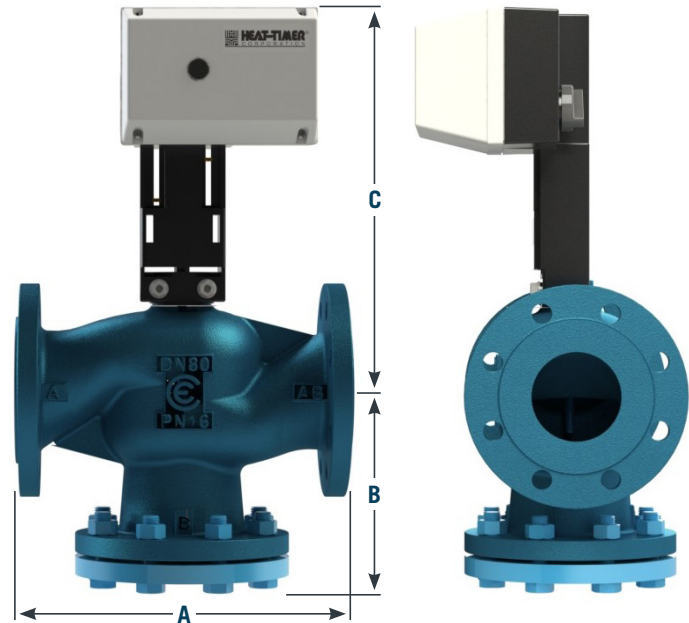
Packing Temp Rating \_\_\_\_\_ 302°F (150°C)

Maximum Operating Pressure at 302°F \_\_\_\_\_ 55 PSI



## 2-WAY VACUUM STEAM APPLICATION VALVES—BALANCE PLUG/DOUBLE SEATED

**Vacuum Steam Heating.** 2-way valves can modulate the flow of sub-atmospheric steam from the boiler or other source into a steam distribution system. Actuators are equipped with a position feedback signal. A typical example of this type of application would be using vacuum steam to heat radiators in a building. When the control, such as the SRC Platinum, calls to put heat into the system, the 2-way valve partially modulates open and steam flows into the radiators based on the outdoor air temperature. Then when the control determines that sufficient heat has entered the radiators, the control marginally closes the 2-way valve reducing the flow of steam.



VALVE SIZE	PART NUMBER	PORT	FLOW CV RATING	DIMENSIONS—INCHES			SHIPPING WEIGHT LBS	MOTOR SPEED APPROXIMATE MINUTES
				A	B	C		
2 ½"	928072-XX	Balanced	73	11.4"	6.9"	13.5"	66	2
3"	928073-XX	Balanced	115	12.2"	7.3"	13.9"	83	2
4"	928074-XX	Balanced	150	13.8"	8.1"	14.4"	128	2
5"	928075-XX	Balanced	231	15.7"	10.0"	15.3"	162	2
6"	928076-XX	Balanced	347	18.9"	10.8"	16"	205	2
8"	928078-XX	Double seated	578	23.6"	10.8"	23.4"	400	2

**NOTE:** Replace **XX** as follows: **00** for 24V Floating Actuator, **CV** for 0–10V Proportional Actuator, **VAC** for 24V Floating Actuator with Valve Position Feedback.



## SPECIFICATIONS

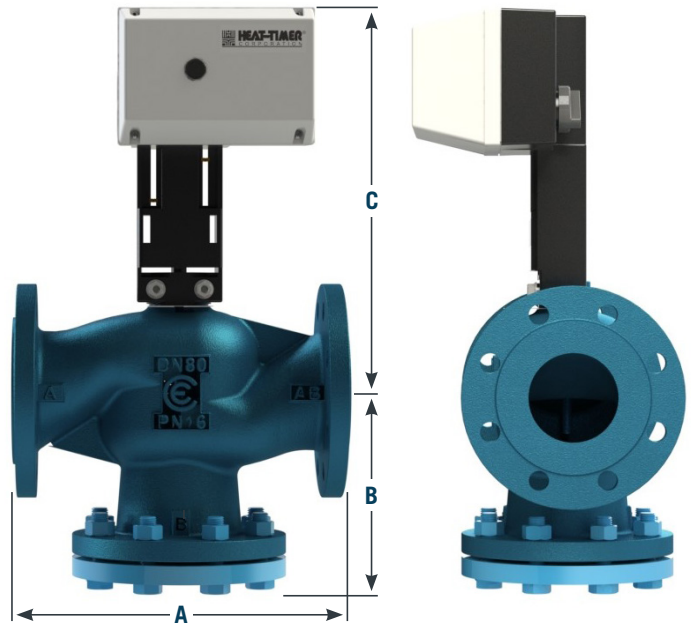
Valve Body Material \_\_\_\_\_ ANSI B16.1 Iron  
 Valve Connection \_\_\_\_\_ 125 lb ANSI Flange  
 Temperature Rating \_\_\_\_\_ 14°F to 302°F (-10°C to 150°C)  
 Stem/Plug Material \_\_\_\_\_ Stainless/Brass  
 Seat Closure \_\_\_\_\_ Single Seated ANSI | Class IV Shutoff  
 Packing Material \_\_\_\_\_ Multi Packed Long Life EDPM Rubber  
 Packing Temp Rating \_\_\_\_\_ 302°F (150°C)  
 Maximum Operating Pressure at 302°F \_\_\_\_\_ 55 PSI



## 2-WAY STEAM APPLICATION VALVES—SINGLE SEATED

**Low Pressure Steam Heating.** 2-way valves can turn on or off the flow of steam from the boiler or other sources into a steam distribution system under 15 PSI. A typical example of this type of application would be using steam to heat radiators in a one or two pipe steam heated building using the MPC Platinum control.

**Steam To Hot Water Heat Exchanger.** 2-way valves can be used to control the amount of steam entering a system. A typical example of this type of application would be to regulate the amount of steam entering a heat exchanger to maintain the hot water output temperature using the HWR Platinum control. When the load changes, the valve is signaled to change the amount of steam entering the heat exchanger.



VALVE SIZE	PART NUMBER	FLOW CV RATING	CLOSE OFF PRESSURE RATING	DIMENSIONS—INCHES			SHIPPING WEIGHT LBS	MOTOR SPEED APPROXIMATE MINUTES
				A	B	C		
2 ½"	928272-XX	73	62	11.4"	6.9"	13.5"	67	2
3"	928273-XX	116	41	12.2"	7.4"	13.9"	84	2
4"	928274-XX	151	25	13.8"	8.1"	14.4"	129	2
5"	928275-XX	232	15	15.7"	9.2"	15.3"	163	2
6"	92827 6-XX	348	10	18.9"	10.9"	16"	206	2

**NOTE:** Replace **XX** as follows: **00** for 24V Floating Actuator, **CV** for 0–10V Proportional Actuator, **VAC** for 24V Floating Actuator with Valve Position Feedback.



## SPECIFICATIONS

Valve Body Material \_\_\_\_\_ ANSI B16.1 Iron

Valve Connection \_\_\_\_\_ 125 lb ANSI Flange

Temperature Rating \_\_\_\_\_ 14°F to 302°F (-10°C to 150°C)

Stem/Plug Material \_\_\_\_\_ Stainless/Brass

Seat Closure \_\_\_\_\_ Single Seated ANSI | Class IV Shutoff

Packing Material \_\_\_\_\_ Long Life EPDM Rubber

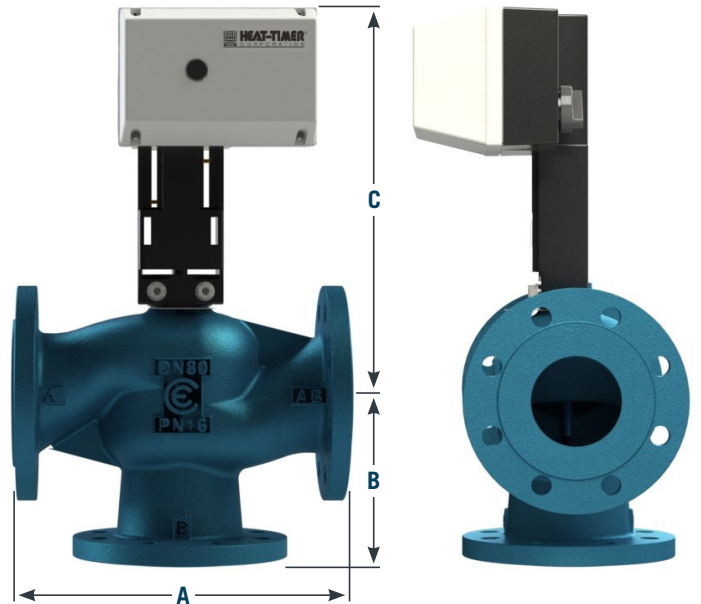
Packing Temp Rating \_\_\_\_\_ 302°F (150°C)

Maximum Operating Pressure at 302°F \_\_\_\_\_ 55 PSI



## 3-WAY HOT WATER HEATING APPLICATION—CONVERTED VALVES

**Hot Water/Hydronic Heating.** The standard 2-way single seated valves can be converted and used as a 3-way valve simply by removing the lower ANSI plate. In a 3-way valve configuration valves are used to mix heating water to a desired temperature. The hot water from the boiler is blended with the correct proportion of cooler water returning from the system to maintain the target temperature as the HWR Platinum control resets the hot water temperature based on outside temperature. The optional reversal operation of the actuator allows the HOT supply and the COLD supply to be interchangeable, allowing additional flexibility in the installation of the valve.



VALVE SIZE	PART NUMBER	FLOW CV RATING	CLOSE OFF PRESSURE RATING	DIMENSIONS—INCHES			SHIPPING WEIGHT LBS	MOTOR SPEED APPROXIMATE MINUTES
				A	B	C		
2 ½"	928272-XX	73	62	11.4"	5.7"	13.5"	67	2
3"	928273-XX	116	41	12.2"	6.1"	13.9"	84	2
4"	928274-XX	151	25	13.8"	6.9"	14.4"	129	2
5"	928275-XX	232	15	15.7"	7.9"	15.3"	163	2
6"	928276-XX	348	10	18.9"	9.5"	16"	206	2

**NOTE:** Replace **XX** as follows: **00** for 24V Floating Actuator, **CV** for 0–10V Proportional Actuator, **VAC** for 24V Floating Actuator with Valve Position Feedback.



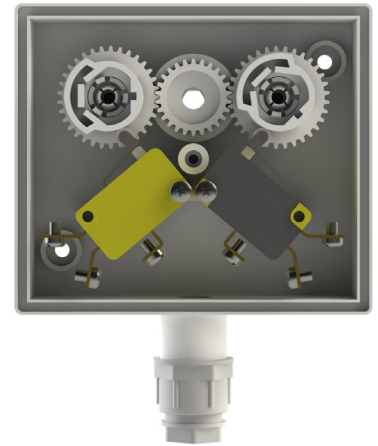
## SPECIFICATIONS

Valve Body Material \_\_\_\_\_ ANSI B16.1 Iron  
 Valve Connection \_\_\_\_\_ 125 lb ANSI Flange  
 Temperature Rating \_\_\_\_\_ 14°F to 302°F (-10°C to 150°C)  
 Stem/Plug Material \_\_\_\_\_ Stainless/Brass  
 Seat Closure \_\_\_\_\_ Single Seated ANSI | Class IV Shutoff  
 Packing Material \_\_\_\_\_ Long Life EDPM Rubber  
 Packing Temp Rating \_\_\_\_\_ 302°F (150°C)  
 Maximum Operating Pressure \_\_\_\_\_ 200 PSI @ 200°F | 165 PSI @ 302°F



## ACTUATOR OPTIONS—SPDT END SWITCH KIT

**RSPDT End Switch Accessory Box** (Part Number 905043-00) provides dual SPDT end switch dry contacts. Can be mounted on the 24V Floating Actuators.



## ACTUATOR SPECIFICATIONS

### 24V Actuator without Valve Position Feedback

Input Signal \_\_\_\_\_ 24Vac Floating

Power Consumption \_\_\_\_\_ 12VA

Operating Temperature \_\_\_\_\_ Ambient 5°F to 122°F (-15°C to 50°C)

Locations \_\_\_\_\_ NEMA type 2 / IP54 Indoor Only

User Interface \_\_\_\_\_ Manual Override Handle Status

### 24V Actuator with Valve Position Feedback

Input Signal \_\_\_\_\_ 24Vac Floating

Power Consumption \_\_\_\_\_ 12VA

Operating Temperature \_\_\_\_\_ Ambient 5°F to 122°F (-15°C to 50°C)

Locations \_\_\_\_\_ NEMA type 2 / IP54 Indoor Only

User Interface \_\_\_\_\_ Manual Override Handle Status

Valve Position Feedback Signal \_\_\_\_\_ 0 to 1000 Ohm

### 0–10V Proportional Actuator

Input Signal \_\_\_\_\_ 0 to 10V

Power Consumption \_\_\_\_\_ 12VA

Operating Temperature \_\_\_\_\_ Ambient 5°F to 122°F (-15°C to 50°C)

Locations \_\_\_\_\_ NEMA type 2 / IP54 Indoor Only

User Interface \_\_\_\_\_ Manual Override Handle Status