

# OIL TANK MONITOR

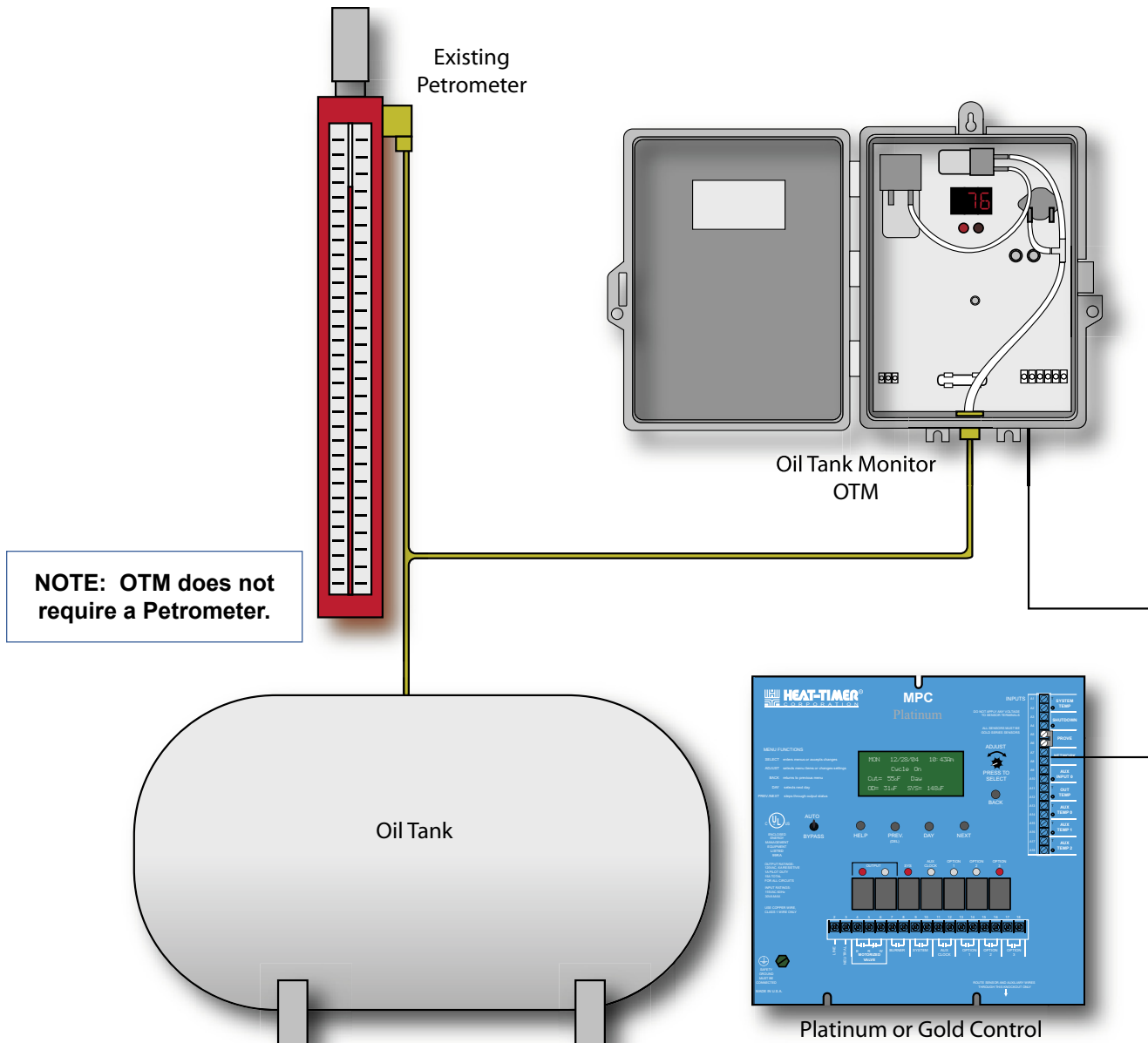
## *OTM* for Platinum

- *Designed for Multiple Oil Types*
- *Can Connect to Platinum and Gold Controls*
- *Built-in Alarm Output*

### Description:

*A Microprocessor Control with built-in pump to monitor, and transmit oil tank levels to Heat-Timer Platinum and Gold Controls.* The Oil Tank Monitor displays the number of inches of oil in a tank with large 3/8" inch digits that can be clearly read from across a boiler room. In addition, the unit can activate a local alarm if the oil level falls below

a desired number of inches. The Oil Tank Monitor is also designed to transmit the tank level of any of the three major heating oils available (Oil #2, Oil #4, and Oil #6) to a Heat-Timer Platinum control over the Internet or a Heat-Timer Visual Gold Remote Communications network. The Internet and Visual Gold will allow remote users to monitor the level of the tank and dial out alarms if the tank level is below the desired level.

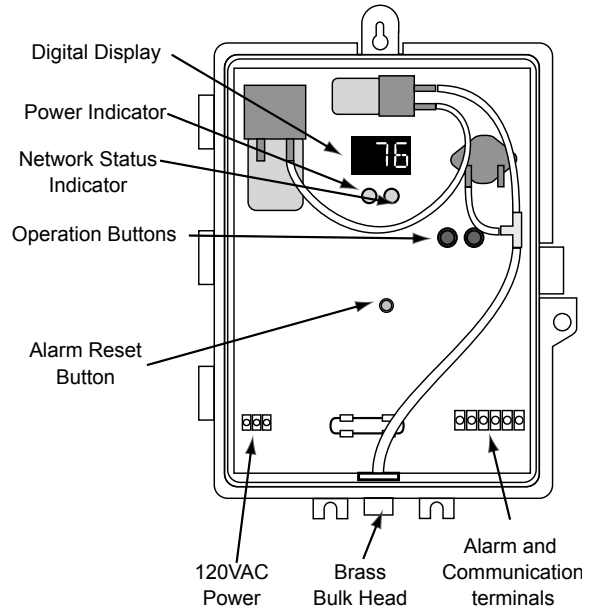
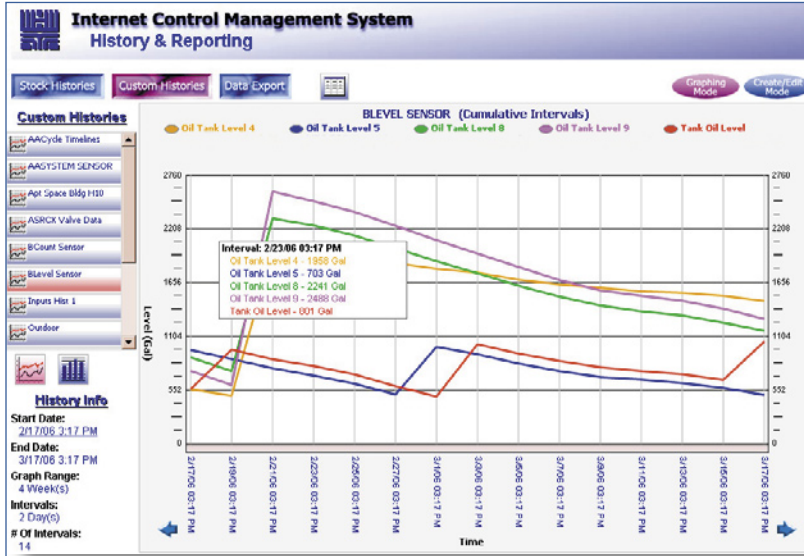


The Oil Tank Monitor has a pump for automatic pressure compensation. An internal timer energizes the pump at regular intervals to insure correct operation. The pump can also be programmed to activate immediately for testing or after maintenance.

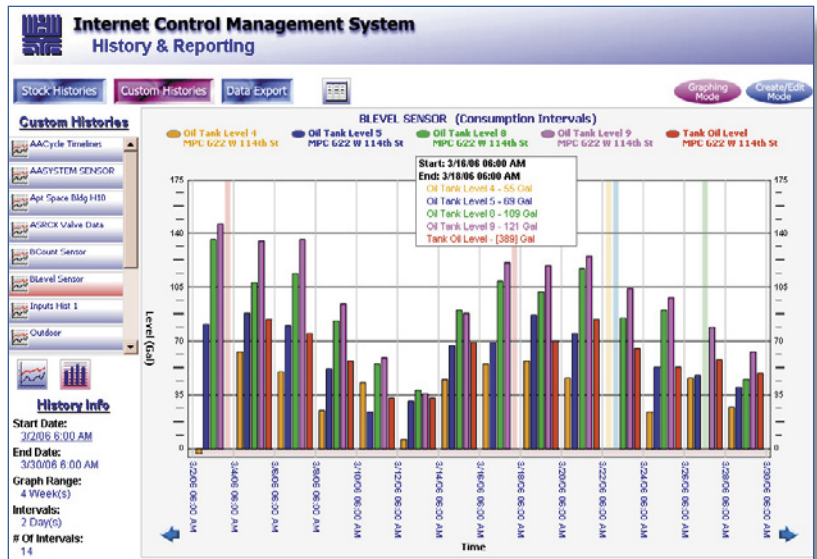
The Oil Tank Monitor's internal programming mode allows adjustment of the Type of Oil used, the alarm level in inches and an offset value for tube

placement in the oil tank. Once programmed, these values will not be lost if power is interrupted or lost. The program values are displayed, allowing precise adjustment for each setting.

Internet monitoring, alarming, reporting, and analysis can be customized and configured to meet each job's specific needs.



## OTM Analysis when viewed over the Heat-Timer ICMS (Internet Control Management System) web site.



**NOTE: ICMS web alarm, analysis, and reports requires a monthly access plan from Heat-Timer.**

**Item Description**  
Oil Tank Monitor (OTM)

**Part #**  
926705-00

ISO 9001:2000  
CERTIFIED

